



Twin Arch Farm LLC
 Address: 200 Twin Arch Road, Rock Tavern, NY 12575
 Contact Name:
 Contact Phone:
 License #: MICR-24-000116
 Sample ID: 2411SMNY0339.1402



Phyto-Farma Labs
 a Smithers company

CERTIFICATE OF ANALYSIS

Permit #: OCM-CPL-00004

Certificate: 7295.1

BLUE PAVE FLOWER

Lot #: AUG24BPGH1
 Sample ID: 2411SMNY0339.1402
 Regulatory Category: Adult Use
 Received: 11/15/2024
 Sampling Location: 200 Twin Arch Road, Rock Tavern, NY 12575

Lot Size: 800
 Sample Type: Flower
 Amount Received: 8
 Sample Collected: 11/15/2024 10:08 PM
 Published: 11/22/2024



COMPLIANCE FOR RETAIL

| | | | | |
|------------------------------------|---------------------------------------|--|------------------------------|-------------------------------------|
| Cannabinoid Profile Pass | Terpenes Total Pass | Residual Solvents Not Tested | Pass Sample Status | |
| Pesticides Pass | Mycotoxins Pass | Water Activity Pass | | 27.9% Total THC |
| Trace Metals Pass | Microbial Contaminants Pass | Moisture Analysis Pass | | 0.108% Total CBD |
| Filth & Foreign Pass | | | | 28.8 % Total Cannabinoids |

Report Notes: N/A

Alicia Caruso-Thomas
 Laboratory Director

11/22/2024
Alicia Caruso-Thomas

Phyto-Farma Labs
 49 John Hicks Drive
 Warwick, NY 10990
 (845) 202-9737



This is a Phyto-Farma certification that relates only to the material tested and shall not be reproduced, unless in its entirety, without written approval from Phyto-Farma. Test results are confidential, unless explicitly waived. All Pass/Fail results please reference state regulations released on 01FEB2024. Pass/Fail results do not use uncertainty, but is available upon request. The product represented has been tested by Phyto-Farma Labs using validated scientific methodologies. Note action levels are state determined thresholds for human safety and consumption. Acronym Definitions: ND - Not Detected, LOQ - Limit of Quantification, ULOQ - Upper Limit of Quantification; are terms used to describe the reliably measured smallest and largest concentrations. <LOQ> denotes the result is above detection limit, but below quantifiable limit. CFU - Colony Forming Units. Cannabis Product Sampling SOP# SOP.T.20.010.



Twin Arch Farm LLC
 Address: 200 Twin Arch Road, Rock Tavern, NY 12575
 Contact Name:
 Contact Phone:
 License #: MICR-24-000116
 Sample ID: 2411SMNY0339.1402



Phyto-Farma Labs
 a Smithers company

CERTIFICATE OF ANALYSIS

Permit #: OCM-CPL-00004

Certificate: 7295.1

Average Cannabinoid Profile

Pass

Sample Analysis

Date: 11/20/2024 03:24 PM

SOP: NY.SOPT.40.260

Analyzed By: HPLC

Sample Weight: N/A

Analyst: Stephanie Knapp

| Analyte | LOQ (%) | Average % (w/w) | mg/serving | Homogeneity [†] |
|--|---------|-----------------|------------|--------------------------|
| Total Tetrahydrocannabinol (THC) | - | 27.9 | 978 | |
| Tetrahydrocannabinolic acid (THCA) | 0.500 | 31.3 | 1100 | |
| Δ8-THC | 0.500 | <LOQ | <LOQ | |
| Δ9-THC | 0.500 | 0.468 | 16.4 | |
| Δ10-THC-RS | 0.500 | <LOQ | <LOQ | |
| Δ10-THC-RR | 0.500 | <LOQ | <LOQ | |
| Total Cannabidiol (CBD) | - | 0.108 | 3.79 | |
| Cannabinadiolic acid (CBDA) | 0.500 | 0.123 | 4.32 | |
| Cannabidiol (CBD) | 0.500 | <LOQ | <LOQ | |
| Total Active Tetrahydrocannabivarin (THCV) | - | 0.0766 | 2.68 | |
| Tetrahydrocannabivarinic acid (THCVA)* | 0.500 | 0.0884 | 3.09 | |
| Tetrahydrocannabivarin (THCV) | 0.500 | <LOQ | <LOQ | |
| Total Active Cannabigerol (CBG) | - | 0.650 | 22.8 | |
| Cannabigerolic acid (CBGA) | 0.500 | 0.468 | 16.4 | |
| Cannabigerol (CBG) | 0.500 | 0.240 | 8.38 | |
| Cannabidivarin (CBDV) | 0.500 | <LOQ | <LOQ | |
| Cannabinol (CBN) | 0.500 | <LOQ | <LOQ | |
| Cannabichromene (CBC) | 0.500 | <LOQ | <LOQ | |

| Cannabinoid Totals | Actual % (w/w) | mg/serving | Homogeneity [†] |
|--------------------|----------------|------------|--------------------------|
| Total Cannabinoids | 28.8 | 1010 | |

* Analyte is not included in ISO 17025 scope of accreditation

† Concentration of individual samples must be ±25% of the mean concentration

Total Active CBD = CBD + (0.877 x CBDA); Total Active CBG = CBG + (0.878 x CBGA);

Total Active THC = (Δ9THC + Δ8THC + Δ10THC-RS + Δ10THC-RR) + (0.877 x THCA);

Total Active THCV = THCV + (0.867 x THCVA);

Serving Weight: 3.5 g

Alicia Caruso-Thomas

11/22/2024

Alicia Caruso-Thomas

Laboratory Director

Phyto-Farma Labs

49 John Hicks Drive

Warwick, NY 10990

(845) 202-9737



Accreditation #: 121747

This is a Phyto-Farma certification that relates only to the material tested and shall not be reproduced, unless in its entirety, without written approval from Phyto-Farma. Test results are confidential, unless explicitly waived. All Pass/Fail results please reference state regulations released on 01FEB2024. Pass/Fail results do not use uncertainty, but is available upon request. The product represented has been tested by Phyto-Farma Labs using validated scientific methodologies. Note action levels are state determined thresholds for human safety and consumption. Acronym Definitions: ND - Not Detected, LOQ - Limit of Quantification, ULOQ - Upper Limit of Quantification; are terms used to describe the reliably measured smallest and largest concentrations. <LOQ* denotes the result is above detection limit, but below quantifiable limit. CFU - Colony Forming Units. Cannabis Product Sampling SOP# SOP.T.20.010.



Twin Arch Farm LLC
 Address: 200 Twin Arch Road, Rock Tavern, NY 12575
 Contact Name:
 Contact Phone:
 License #: MICR-24-000116
 Sample ID: 2411SMNY0339.1402



Phyto-Farma Labs
 a Smithers company

CERTIFICATE OF ANALYSIS

Permit #: OCM-CPL-00004

Certificate: 7295.1

Terpene Total

Pass (3.316%)

Sample Analysis

Date: 11/19/2024 02:10 PM

SOP: NY.SOPT.40.090

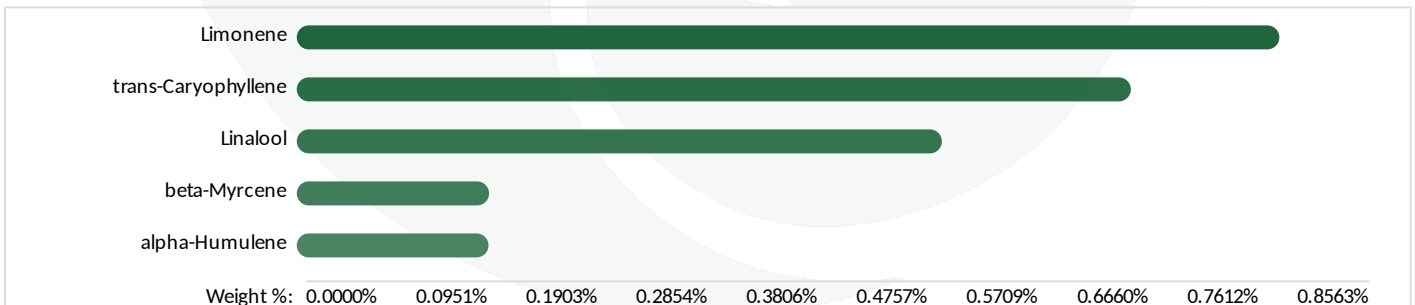
Sample Weight: 0.2126 g

Analyzed By: GC-MS

Analyst: Destiny Ribadeneyra

| Analyte | LOQ (%) | Results (%) | Analyte | LOQ (%) | Results (%) |
|---------------------|-----------|-------------|---------------------|-----------|-------------|
| 3-Carene | 0.0004200 | <LOQ | gamma-Terpinene | 0.0004400 | <LOQ |
| alpha-Bisabolol | 0.0005000 | 0.03470 | gamma-Terpineol | 0.0003000 | <LOQ |
| alpha-Humulene | 0.0005600 | 0.1671 | Geraniol | 0.0004800 | <LOQ |
| alpha-Phellandrene | 0.0006600 | <LOQ | Geranyl acetate | 0.0006200 | <LOQ |
| alpha-Pinene | 0.0004800 | 0.07500 | Guaial | 0.0006000 | <LOQ |
| alpha-Terpinene | 0.0002600 | <LOQ | Isoborneol | 0.0003400 | 0.02120 |
| alpha-Terpineol | 0.0003400 | 0.08330 | Isopulegol | 0.0006600 | <LOQ |
| beta-Myrcene | 0.0006400 | 0.1676 | Limonene | 0.0007400 | 0.8563 |
| beta-Pinene | 0.0006600 | 0.09940 | Linalool | 0.0004600 | 0.5622 |
| Borneol | 0.0004600 | 0.01570 | Menthol | 0.0004600 | <LOQ |
| Camphene | 0.0004400 | 0.01770 | Nerol | 0.0005000 | <LOQ |
| Camphor | 0.0004000 | <LOQ | Pulegone (+) | 0.0005600 | <LOQ |
| Caryophyllene oxide | 0.0005800 | <LOQ | Sabinene | 0.0003400 | 0.1147 |
| Cedrene | 0.0004400 | <LOQ | Sabinene Hydrate | 0.0004200 | <LOQ |
| Cedrol | 0.0005600 | <LOQ | Terpinolene | 0.0005000 | 0.008700 |
| cis-Nerolidol | 0.0006800 | 0.02190 | trans-b-Ocimene | 0.0004200 | 0.01930 |
| cis-Ocimene | 0.0005200 | <LOQ | trans-Caryophyllene | 0.0006600 | 0.7269 |
| Eucalyptol | 0.0007200 | <LOQ | trans-Nerolidol | 0.0007200 | 0.09090 |
| Farnesene | 0.0008400 | 0.1248 | Valencene | 0.0005600 | 0.02730 |
| Fenchone | 0.0005000 | 0.004800 | | | |

| Terpene Totals | % | Pass/Fail |
|----------------|-------|-----------|
| Total Terpenes | 3.316 | PASS |



Alicia Caruso-Thomas
 Laboratory Director

11/22/2024
Alicia Caruso-Thomas

Phyto-Farma Labs
 49 John Hicks Drive
 Warwick, NY 10990
 (845) 202-9737



This is a Phyto-Farma certification that relates only to the material tested and shall not be reproduced, unless in its entirety, without written approval from Phyto-Farma. Test results are confidential, unless explicitly waived. All Pass/Fail results please reference state regulations released on 01FEB2024. Pass/Fail results do not use uncertainty, but is available upon request. The product represented has been tested by Phyto-Farma Labs using validated scientific methodologies. Note action levels are state determined thresholds for human safety and consumption. Acronym Definitions: ND - Not Detected, LOQ - Limit of Quantification, ULOQ - Upper Limit of Quantification; are terms used to describe the reliably measured smallest and largest concentrations. <LOQ* denotes the result is above detection limit, but below quantifiable limit. CFU - Colony Forming Units. Cannabis Product Sampling SOP# SOP.T.20.010.



Twin Arch Farm LLC
 Address: 200 Twin Arch Road, Rock Tavern, NY 12575
 Contact Name:
 Contact Phone:
 License #: MICR-24-000116
 Sample ID: 2411SMNY0339.1402



Phyto-Farma Labs
 a Smithers company

CERTIFICATE OF ANALYSIS

Permit #: OCM-CPL-00004

Certificate: 7295.1

Trace Metals

Pass

Sample Analysis

Date: 11/20/2024 12:05 PM

SOP: NY.SOPT.40.050

Analyzed By: ICP-MS

Sample Weight: 0.1277 g

Analyst: Moni Kaneti

| Analyte | LOQ (µg/g) | Action Limit (µg/g) | Results (µg/g) | Pass/Fail |
|----------------|------------|---------------------|----------------|-----------|
| Antimony (Sb)* | 0.315 | 2.00 | <LOQ | PASS |
| Arsenic (As)* | 0.180 | 0.200 | <LOQ | PASS |
| Cadmium (Cd)* | 0.159 | 0.200 | <LOQ | PASS |
| Chromium (Cr)* | 0.891 | 110 | <LOQ | PASS |
| Copper (Cu)* | 0.984 | 30.0 | 7.31 | PASS |
| Lead (Pb)* | 0.195 | 0.500 | <LOQ | PASS |
| Mercury (Hg)* | 0.0330 | 0.100 | <LOQ | PASS |
| Nickel (Ni)* | 0.273 | 5.00 | <LOQ | PASS |

* Analyte is not included in ISO 17025 scope of accreditation

Mycotoxin Analysis

Pass

Sample Analysis

Date: 11/20/2024 11:06 AM

SOP: NY.SOPT.40.180

Analyzed By: LC-MS/MS

Sample Weight: 0.1 g

Analyst: Destiny Ribadeneyra

| Analyte | LOQ (µg/g) | Action Limit (µg/g) | Results (µg/g) | Pass/Fail |
|-------------------|------------|---------------------|----------------|-----------|
| Sum of Aflatoxins | - | 0.020 | 0 | PASS |
| Aflatoxin B1 | 0.0010 | 0.020 | <LOQ | PASS |
| Aflatoxin B2 | 0.0020 | 0.020 | <LOQ | PASS |
| Aflatoxin G1 | 0.0010 | 0.020 | <LOQ | PASS |
| Aflatoxin G2 | 0.0020 | 0.020 | <LOQ | PASS |
| Ochratoxin A | 0.0020 | 0.020 | <LOQ | PASS |

Alicia Caruso-Thomas
 Laboratory Director

11/22/2024
Alicia Caruso-Thomas

Phyto-Farma Labs
 49 John Hicks Drive
 Warwick, NY 10990
 (845) 202-9737



This is a Phyto-Farma certification that relates only to the material tested and shall not be reproduced, unless in its entirety, without written approval from Phyto-Farma. Test results are confidential, unless explicitly waived. All Pass/Fail results please reference state regulations released on 01FEB2024. Pass/Fail results do not use uncertainty, but is available upon request. The product represented has been tested by Phyto-Farma Labs using validated scientific methodologies. Note action levels are state determined thresholds for human safety and consumption. Acronym Definitions: ND - Not Detected, LOQ - Limit of Quantification, ULOQ - Upper Limit of Quantification; are terms used to describe the reliably measured smallest and largest concentrations. <LOQ* denotes the result is above detection limit, but below quantifiable limit. CFU - Colony Forming Units. Cannabis Product Sampling SOP# SOP.T.20.010.



Twin Arch Farm LLC
 Address: 200 Twin Arch Road, Rock Tavern, NY 12575
 Contact Name:
 Contact Phone:
 License #: MICR-24-000116
 Sample ID: 2411SMNY0339.1402

CERTIFICATE OF ANALYSIS
 Permit #: OCM-CPL-00004

Certificate: 7295.1

Pesticides LC

Pass

Sample Analysis

Date: 11/19/2024 03:38 PM

SOP: NY.SOPT.040.270

Analyzed By: LC-MS/MS

Sample Weight: 1 g

Analyst: Stephanie Knapp

| Analyte | LOQ (ppm) | Action Limit (ppm) | Results (ppm) | Pass/Fail | Analyte | LOQ (ppm) | Action Limit (ppm) | Results (ppm) | Pass/Fail |
|------------------------|-----------|--------------------|---------------|-----------|------------------------|-----------|--------------------|---------------|-----------|
| Abamectin* | 0.0180 | 0.500 | <LOQ | PASS | Imidacloprid* | 0.00800 | 0.400 | <LOQ | PASS |
| Acephate* | 0.00700 | 0.400 | <LOQ | PASS | Indole-3-butyric acid* | 0.00700 | 1.00 | <LOQ | PASS |
| Acequinocyl* | 0.0160 | 2.00 | <LOQ | PASS | Kresoxim methyl* | 0.0120 | 0.400 | <LOQ | PASS |
| Acetamiprid* | 0.00500 | 0.200 | <LOQ | PASS | Malathion* | 0.0110 | 0.200 | <LOQ | PASS |
| Aldicarb* | 0.00500 | 0.400 | <LOQ | PASS | Metalaxyl* | 0.0120 | 0.200 | <LOQ | PASS |
| Azadirachtin* | 0.0220 | 1.00 | <LOQ | PASS | Methiocarb* | 0.00400 | 0.200 | <LOQ | PASS |
| Azoxystrobin* | 0.00600 | 0.200 | <LOQ | PASS | Methomyl* | 0.0120 | 0.400 | <LOQ | PASS |
| Bifenazate* | 0.00600 | 0.200 | <LOQ | PASS | Mevinphos* | 0.0190 | 1.00 | <LOQ | PASS |
| Bifenthrin* | 0.00300 | 0.200 | <LOQ | PASS | MGK-264* | 0.0110 | 0.200 | <LOQ | PASS |
| Boscalid* | 0.0110 | 0.400 | <LOQ | PASS | Myclobutanil* | 0.0130 | 0.200 | <LOQ | PASS |
| Carbaryl* | 0.00600 | 0.200 | <LOQ | PASS | Naled* | 0.00500 | 0.500 | <LOQ | PASS |
| Carbofuran* | 0.00500 | 0.200 | <LOQ | PASS | Oxamyl* | 0.00800 | 1.00 | <LOQ | PASS |
| Chlorantraniliprole* | 0.00600 | 0.200 | <LOQ | PASS | Paclobutrazol* | 0.0150 | 0.400 | <LOQ | PASS |
| Chloromequat chloride* | 0.0190 | 1.00 | <LOQ | PASS | Permethrins, Total* | 0.00900 | 0.200 | <LOQ | PASS |
| Chlorpyrifos* | 0.00900 | 0.200 | <LOQ | PASS | Phosmet* | 0.00700 | 0.200 | <LOQ | PASS |
| Clofentezine* | 0.0100 | 0.200 | <LOQ | PASS | Piperonyl Butoxide* | 0.00600 | 2.00 | <LOQ | PASS |
| Daminozide* | 0.00400 | 1.00 | <LOQ | PASS | Prallethrin* | 0.00800 | 0.200 | <LOQ | PASS |
| Diazinon* | 0.00700 | 0.200 | <LOQ | PASS | Propiconazole* | 0.00600 | 0.400 | <LOQ | PASS |
| Dichlorvos* | 0.0120 | 1.00 | <LOQ | PASS | Propoxur* | 0.00800 | 0.200 | <LOQ | PASS |
| Dimethoate* | 0.00600 | 0.200 | <LOQ | PASS | Pyrethrins* | 0.0140 | 1.00 | <LOQ | PASS |
| Dimethomorph* | 0.00500 | 1.00 | <LOQ | PASS | Pyridaben* | 0.00600 | 0.200 | <LOQ | PASS |
| Ethoprophos* | 0.0130 | 0.200 | <LOQ | PASS | Spinetoram, Total* | 0.00500 | 1.00 | <LOQ | PASS |
| Etofenprox* | 0.00300 | 0.400 | <LOQ | PASS | Spinosad, Total* | 0.00600 | 0.200 | <LOQ | PASS |
| Etoxazole* | 0.00500 | 0.200 | <LOQ | PASS | Spiromesifen* | 0.0130 | 0.200 | <LOQ | PASS |
| Fenhexamid* | 0.0150 | 1.00 | <LOQ | PASS | Spirotetramat* | 0.00600 | 0.200 | <LOQ | PASS |
| Fenoxycarb* | 0.0110 | 0.200 | <LOQ | PASS | Spiroxamine* | 0.00400 | 0.200 | <LOQ | PASS |
| Fenpyroximate* | 0.00200 | 0.400 | <LOQ | PASS | Tebuconazole* | 0.0120 | 0.400 | <LOQ | PASS |
| Flonicamid* | 0.00700 | 1.00 | <LOQ | PASS | Thiacloprid* | 0.00800 | 0.200 | <LOQ | PASS |
| Fludioxonil* | 0.0170 | 0.400 | <LOQ | PASS | Thiamethoxam* | 0.00800 | 0.200 | <LOQ | PASS |
| Hexythiazox* | 0.00500 | 1.00 | <LOQ | PASS | | | | | |

* Analyte is not included in ISO 17025 scope of accreditation

Alicia Caruso-Thomas
 Laboratory Director

11/22/2024
Alicia Caruso-Thomas

Phyto-Farma Labs
 49 John Hicks Drive
 Warwick, NY 10990
 (845) 202-9737



This is a Phyto-Farma certification that relates only to the material tested and shall not be reproduced, unless in its entirety, without written approval from Phyto-Farma. Test results are confidential, unless explicitly waived. All Pass/Fail results please reference state regulations released on 01FEB2024. Pass/Fail results do not use uncertainty, but is available upon request. The product represented has been tested by Phyto-Farma Labs using validated scientific methodologies. Note action levels are state determined thresholds for human safety and consumption. Acronym Definitions: ND - Not Detected, LOQ - Limit of Quantification, ULOQ - Upper Limit of Quantification; are terms used to describe the reliably measured smallest and largest concentrations. <LOQ* denotes the result is above detection limit, but below quantifiable limit. CFU - Colony Forming Units. Cannabis Product Sampling SOP# SOP.T.20.010.



Twin Arch Farm LLC
 Address: 200 Twin Arch Road, Rock Tavern, NY 12575
 Contact Name:
 Contact Phone:
 License #: MICR-24-000116
 Sample ID: 2411SMNY0339.1402



Phyto-Farma Labs
 a Smithers company

CERTIFICATE OF ANALYSIS

Permit #: OCM-CPL-00004

Certificate: 7295.1

Pesticides GC

Pass

Sample Analysis

Date: 11/19/2024 03:31 PM

SOP: NYS.SOPT.040.271

Analyzed By: GC-MS/MS

Sample Weight: N/A

Analyst: Stephanie Knapp

| Analyte | LOQ (ppm) | Action Limit (ppm) | Results (ppm) | Pass/Fail |
|--------------------------|-----------|--------------------|---------------|-----------|
| Captan* | 0.300 | 1.00 | <LOQ | PASS |
| Chlordane* | 0.0700 | 1.00 | <LOQ | PASS |
| Chlorfenapyr* | 0.100 | 1.00 | <LOQ | PASS |
| Coumaphos* | 0.190 | 1.00 | <LOQ | PASS |
| Cyfluthrin* | 0.110 | 1.00 | <LOQ | PASS |
| Cypermethrin* | 0.240 | 1.00 | <LOQ | PASS |
| Fipronil* | 0.170 | 0.400 | <LOQ | PASS |
| Imazalil* | 0.170 | 0.200 | <LOQ | PASS |
| Methyl parathion* | 0.0900 | 0.200 | <LOQ | PASS |
| Pentachloronitrobenzene* | 0.170 | 1.00 | <LOQ | PASS |
| Trifloxystrobin* | 0.110 | 0.200 | <LOQ | PASS |

* Analyte is not included in ISO 17025 scope of accreditation

Alicia Caruso-Thomas

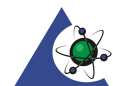
11/22/2024

Alicia Caruso-Thomas

Laboratory Director

Phyto-Farma Labs

49 John Hicks Drive
 Warwick, NY 10990
 (845) 202-9737



Accreditation #: 121747

This is a Phyto-Farma certification that relates only to the material tested and shall not be reproduced, unless in its entirety, without written approval from Phyto-Farma. Test results are confidential, unless explicitly waived. All Pass/Fail results please reference state regulations released on 01FEB2024. Pass/Fail results do not use uncertainty, but is available upon request. The product represented has been tested by Phyto-Farma Labs using validated scientific methodologies. Note action levels are state determined thresholds for human safety and consumption. Acronym Definitions: ND - Not Detected, LOQ - Limit of Quantification, ULOQ - Upper Limit of Quantification; are terms used to describe the reliably measured smallest and largest concentrations. <LOQ* denotes the result is above detection limit, but below quantifiable limit. CFU - Colony Forming Units. Cannabis Product Sampling SOP# SOP.T.20.010.



Twin Arch Farm LLC
 Address: 200 Twin Arch Road, Rock Tavern, NY 12575
 Contact Name:
 Contact Phone:
 License #: MICR-24-000116
 Sample ID: 2411SMNY0339.1402



Phyto-Farma Labs
 a Smithers company

CERTIFICATE OF ANALYSIS

Permit #: OCM-CPL-00004

Certificate: 7295.1

Microbial Impurities - MDG

Pass

Sample Analysis

Date: 11/21/2024 09:28 AM

SOP: NYS.SOPT.40.273

Analyzed By: PCR

Analyst: Kristy Lee

| Analyte | Microbial Type | LOQ (CFU/g) | Allowable Limit | Results | Pass/Fail |
|--|----------------|-------------|-----------------|--------------|-----------|
| Shiga toxin-producing Escherichia coli | Bacterial | 1 | Not Detected | Not Detected | PASS |
| Salmonella species | Bacterial | 1 | Not Detected | Not Detected | PASS |
| Aspergillus flavus | Fungal | 1 | Not Detected | Not Detected | PASS |
| Aspergillus niger | Fungal | 1 | Not Detected | Not Detected | PASS |
| Aspergillus terreus | Fungal | 1 | Not Detected | Not Detected | PASS |
| Aspergillus fumigatus | Fungal | 1 | Not Detected | Not Detected | PASS |

Alicia Caruso-Thomas

11/22/2024

Alicia Caruso-Thomas

Laboratory Director

Phyto-Farma Labs

49 John Hicks Drive
 Warwick, NY 10990
 (845) 202-9737



Accreditation #: 121747

This is a Phyto-Farma certification that relates only to the material tested and shall not be reproduced, unless in its entirety, without written approval from Phyto-Farma. Test results are confidential, unless explicitly waived. All Pass/Fail results please reference state regulations released on 01FEB2024. Pass/Fail results do not use uncertainty, but is available upon request. The product represented has been tested by Phyto-Farma Labs using validated scientific methodologies. Note action levels are state determined thresholds for human safety and consumption. Acronym Definitions: ND - Not Detected, LOQ - Limit of Quantification, ULOQ - Upper Limit of Quantification; are terms used to describe the reliably measured smallest and largest concentrations. <LOQ> denotes the result is above detection limit, but below quantifiable limit. CFU - Colony Forming Units. Cannabis Product Sampling SOP# SOP.T.20.010.



Twin Arch Farm LLC
 Address: 200 Twin Arch Road, Rock Tavern, NY 12575
 Contact Name:
 Contact Phone:
 License #: MICR-24-000116
 Sample ID: 2411SMNY0339.1402



Phyto-Farma Labs
 a Smithers company

CERTIFICATE OF ANALYSIS
 Permit #: OCM-CPL-00004

Certificate: 7295.1

Microbial Impurities - TAPC

Pass

Sample Analysis

Date: 11/21/2024 09:40 AM **SOP:** NYS.SOPT.040.200
Analyzed By: Plating
Analyst: Kristy Lee

| Analyte | LOQ (CFU/g) | Action Limit (CFU/g) | Results (CFU/g) | Pass/Fail |
|-------------------------------|-------------|----------------------|-----------------|-----------|
| Total Aerobic Bacteria/CDP-TC | 5 | N/A | <LOQ | PASS |

Microbial Impurities - TYMC

Pass

Sample Analysis

Date: 11/22/2024 03:41 PM **SOP:** NYS.SOPT.040.200
Analyzed By: Plating
Analyst: Kristy Lee

| Analyte | LOQ (CFU/g) | Action Limit (CFU/g) | Results (CFU/g) | Pass/Fail |
|----------------------|-------------|----------------------|-----------------|-----------|
| Total Yeast and Mold | 5 | N/A | <LOQ | PASS |
| Mold Count | 5 | N/A | <LOQ | PASS |
| Yeast Count | 5 | N/A | <LOQ | PASS |

Alicia Caruso-Thomas
 Laboratory Director

11/22/2024
Alicia Caruso-Thomas

Phyto-Farma Labs
 49 John Hicks Drive
 Warwick, NY 10990
 (845) 202-9737



This is a Phyto-Farma certification that relates only to the material tested and shall not be reproduced, unless in its entirety, without written approval from Phyto-Farma. Test results are confidential, unless explicitly waived. All Pass/Fail results please reference state regulations released on 01FEB2024. Pass/Fail results do not use uncertainty, but is available upon request. The product represented has been tested by Phyto-Farma Labs using validated scientific methodologies. Note action levels are state determined thresholds for human safety and consumption. Acronym Definitions: ND - Not Detected, LOQ - Limit of Quantification, ULOQ - Upper Limit of Quantification; are terms used to describe the reliably measured smallest and largest concentrations. <LOQ* denotes the result is above detection limit, but below quantifiable limit. CFU - Colony Forming Units. Cannabis Product Sampling SOP# SOP.T.20.010.



Twin Arch Farm LLC
 Address: 200 Twin Arch Road, Rock Tavern, NY 12575
 Contact Name:
 Contact Phone:
 License #: MICR-24-000116
 Sample ID: 2411SMNY0339.1402



Phyto-Farma Labs
 a Smithers company

CERTIFICATE OF ANALYSIS

Permit #: OCM-CPL-00004

Certificate: 7295.1

Foreign Matter

Pass

Sample Analysis

Date: 11/19/2024 05:10 PM **SOP:** NYS.SOPT.040.250
Analyzed By: Microscopy
Analyst: Stephanie Knapp

| Analyte | LOQ | Action Limit | Results | Pass/Fail |
|----------------------------|-----|--------------|---------|-----------|
| Mammalian excreta (mg/lb) | 0 | 1.0 | 0 | PASS |
| Stems >3mm in diameter (%) | 0 | 5.0 | 0 | PASS |
| Other Foreign Material (%) | 0 | 2.0 | 0 | PASS |

Moisture Content

Pass

Sample Analysis

Date: 11/19/2024 10:35 AM **SOP:** NY.SOPT.040.220
Analyzed By: Moisture Balance
Analyst: Moni Kaneti

| Analyte | LOQ (%) | Action Limit (%) | Results (%) | Pass/Fail |
|------------------|---------|------------------|-------------|-----------|
| Moisture Content | 0 | 5.0 - 15.0 | 11.9 | PASS |

Water Activity

Pass

Sample Analysis

Date: 11/19/2024 10:39 AM **SOP:** NY.SOPT.040.210
Analyzed By: Water Activity Meter
Analyst: Moni Kaneti

| Analyte | LOQ (Aw) | Action Limit (Aw) | Results (Aw) | Pass/Fail |
|----------------|----------|-------------------|--------------|-----------|
| Water Activity | 0.25 | 0.65 | 0.38 | PASS |

Alicia Caruso-Thomas
 Laboratory Director

11/22/2024
Alicia Caruso-Thomas

Phyto-Farma Labs
 49 John Hicks Drive
 Warwick, NY 10990
 (845) 202-9737



This is a Phyto-Farma certification that relates only to the material tested and shall not be reproduced, unless in its entirety, without written approval from Phyto-Farma. Test results are confidential, unless explicitly waived. All Pass/Fail results please reference state regulations released on 01FEB2024. Pass/Fail results do not use uncertainty, but is available upon request. The product represented has been tested by Phyto-Farma Labs using validated scientific methodologies. Note action levels are state determined thresholds for human safety and consumption. Acronym Definitions: ND - Not Detected, LOQ - Limit of Quantification, ULOQ - Upper Limit of Quantification; are terms used to describe the reliably measured smallest and largest concentrations. <LOQ* denotes the result is above detection limit, but below quantifiable limit. CFU - Colony Forming Units. Cannabis Product Sampling SOP# SOP.T.20.010.