



**Twin Arch Farm LLC**  
 Address: 200 Twin Arch Road, Rock Tavern, NY 12575  
 Contact Name:  
 Contact Phone:  
 License #: MICR-24-000116  
 Sample ID: 2501SMNY0035.0143



**Phyto-Farma Labs**  
 a Smithers company

**CERTIFICATE OF ANALYSIS**

Permit #: OCM-CPL-00004

Certificate: 8049.1

**BLUE PAVE FLOWER**

Lot #: AUG24BPGH2      Lot Size: 700  
 Sample ID: 2501SMNY0035.0143      Sample Type: Flower  
 Regulatory Category: Adult Use      Amount Received: 8  
 Received: 01/16/2025      Sample Collected: 01/16/2025 11:03 AM  
 Sampling Location: 200 Twin Arch Rd, Rock Tavern, NY      Published: 01/22/2025



**COMPLIANCE FOR RETAIL**

<b>Cannabinoid Profile</b> Pass	<b>Terpenes Total</b> Pass	<b>Residual Solvents</b> Not Tested	<b>Pass</b> Sample Status	
<b>Pesticides</b> Pass	<b>Mycotoxins</b> Pass	<b>Water Activity</b> Pass		<b>25.1%</b> Total THC
<b>Trace Metals</b> Pass	<b>Microbial Contaminants</b> Pass	<b>Moisture Analysis</b> Pass		<b>0.0737%</b> Total CBD
	<b>Filth &amp; Foreign</b> Pass		<b>25.6 %</b> Total Cannabinoids	

Report Notes: N/A

**Alicia Caruso-Thomas**  
 Laboratory Director

01/22/2025  
*Alicia Caruso-Thomas*

**Phyto-Farma Labs**  
 49 John Hicks Drive  
 Warwick, NY 10990  
 (845) 202-9737



This is a Phyto-Farma certification that relates only to the material tested and shall not be reproduced, unless in its entirety, without written approval from Phyto-Farma. Test results are confidential, unless explicitly waived. All Pass/Fail results please reference state regulations released on 01FEB2024. Pass/Fail results do not use uncertainty, but is available upon request. The product represented has been tested by Phyto-Farma Labs using validated scientific methodologies. Note action levels are state determined thresholds for human safety and consumption. Acronym Definitions: ND - Not Detected, LOQ - Limit of Quantification, ULOQ - Upper Limit of Quantification; are terms used to describe the reliably measured smallest and largest concentrations. <LOQ> denotes the result is above detection limit, but below quantifiable limit. CFU - Colony Forming Units. Cannabis Product Sampling SOP# SOP.T.20.010.



**Twin Arch Farm LLC**  
 Address: 200 Twin Arch Road, Rock Tavern, NY 12575  
 Contact Name:  
 Contact Phone:  
 License #: MICR-24-000116  
 Sample ID: 2501SMNY0035.0143



**Phyto-Farma Labs**  
 a Smithers company

**CERTIFICATE OF ANALYSIS**

Permit #: OCM-CPL-00004

Certificate: 8049.1

**Average Cannabinoid Profile**

**Pass**

**Sample Analysis**

**Date:** 01/22/2025 01:19 PM

**SOP:** NY.SOPT.40.260

**Analyzed By:** HPLC

**Sample Weight:** N/A

**Analyst:** Destiny Ribadeneyra

Analyte	LOQ (%)	Average % (w/w)	mg/serving	Homogeneity <sup>†</sup>
Total Tetrahydrocannabinol (THC)	-	25.1	877	
Tetrahydrocannabinolic acid (THCA)	0.500	27.2	953	
Δ8-THC	0.500	<LOQ	<LOQ	
Δ9-THC	0.500	1.08	37.9	
Δ10-THC-RS	0.500	<LOQ	<LOQ	
Δ10-THC-RR	0.500	0.101	3.54	
Total Cannabidiol (CBD)	-	0.0737	2.58	
Cannabinadiolic acid (CBDA)	0.500	0.0840	2.94	
Cannabidiol (CBD)	0.500	<LOQ	<LOQ	
Total Active Tetrahydrocannabivarin (THCV)	-	0.0627	2.19	
Tetrahydrocannabivarinic acid (THCVA)*	0.500	0.0723	2.53	
Tetrahydrocannabivarin (THCV)	0.500	<LOQ	<LOQ	
Total Active Cannabigerol (CBG)	-	0.423	14.8	
Cannabigerolic acid (CBGA)	0.500	0.334	11.7	
Cannabigerol (CBG)	0.500	0.130	4.54	
Cannabidivarin (CBDV)	0.500	0.0224	0.784	
Cannabinol (CBN)	0.500	<LOQ	<LOQ	
Cannabichromene (CBC)	0.500	<LOQ	<LOQ	

Cannabinoid Totals	Actual % (w/w)	mg/serving	Homogeneity <sup>†</sup>
Total Cannabinoids	25.6	897	

\* Analyte is not included in ISO 17025 scope of accreditation

† Concentration of individual samples must be ±25% of the mean concentration

Total Active CBD = CBD + (0.877 x CBDA); Total Active CBG = CBG + (0.878 x CBGA);

Total Active THC = (Δ9THC + Δ8THC + Δ10THC-RS + Δ10THC-RR) + (0.877 x THCA);

Total Active THCV = THCV + (0.867 x THCVA);

Serving Weight: 3.5 g

**Alicia Caruso-Thomas**

01/22/2025

*Alicia Caruso-Thomas*

Laboratory Director

**Phyto-Farma Labs**

49 John Hicks Drive  
 Warwick, NY 10990  
 (845) 202-9737



Accreditation #: 121747

This is a Phyto-Farma certification that relates only to the material tested and shall not be reproduced, unless in its entirety, without written approval from Phyto-Farma. Test results are confidential, unless explicitly waived. All Pass/Fail results please reference state regulations released on 01FEB2024. Pass/Fail results do not use uncertainty, but is available upon request. The product represented has been tested by Phyto-Farma Labs using validated scientific methodologies. Note action levels are state determined thresholds for human safety and consumption. Acronym Definitions: ND - Not Detected, LOQ - Limit of Quantification, ULOQ - Upper Limit of Quantification; are terms used to describe the reliably measured smallest and largest concentrations. <LOQ\* denotes the result is above detection limit, but below quantifiable limit. CFU - Colony Forming Units. Cannabis Product Sampling SOP# SOP.T.20.010.



**Twin Arch Farm LLC**  
 Address: 200 Twin Arch Road, Rock Tavern, NY 12575  
 Contact Name:  
 Contact Phone:  
 License #: MICR-24-000116  
 Sample ID: 2501SMNY0035.0143

**CERTIFICATE OF ANALYSIS**  
 Permit #: OCM-CPL-00004

Certificate: 8049.1

**Terpene Total**

**Pass (3.332%)**

**Sample Analysis**

Date: 01/21/2025 11:14 AM

SOP: NY.SOPT.40.090

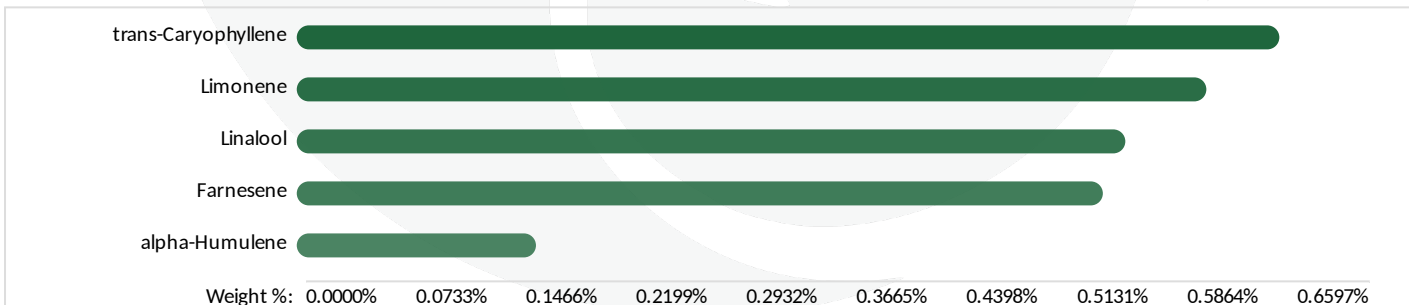
Sample Weight: 0.1758 g

Analyzed By: GC-MS

Analyst: Stephanie Knapp

Analyte	LOQ (%)	Results (%)	Analyte	LOQ (%)	Results (%)
3-Carene	0.0004200	<LOQ	gamma-Terpinene	0.0004400	<LOQ
alpha-Bisabolol	0.0005000	0.03770	gamma-Terpineol	0.0003000	<LOQ
alpha-Humulene	0.0005600	0.1606	Geraniol	0.0004800	<LOQ
alpha-Phellandrene	0.0006600	<LOQ	Geranyl acetate	0.0006200	<LOQ
alpha-Pinene	0.0004800	0.06130	Guaiol	0.0006000	<LOQ
alpha-Terpinene	0.0002600	<LOQ	Isoborneol	0.0003400	0.02220
alpha-Terpineol	0.0003400	0.09400	Isopulegol	0.0006600	<LOQ
beta-Myrcene	0.0006400	0.1446	Limonene	0.0007400	0.6107
beta-Pinene	0.0006600	0.07440	Linalool	0.0004600	0.5563
Borneol	0.0004600	0.01640	Menthol	0.0004600	<LOQ
Camphene	0.0004400	0.01210	Nerol	0.0005000	<LOQ
Camphor	0.0004000	<LOQ	Pulegone (+)	0.0005600	<LOQ
Caryophyllene oxide	0.0005800	0.01430	Sabinene	0.0003400	0.08610
Cedrene	0.0004400	<LOQ	Sabinene Hydrate	0.0004200	<LOQ
Cedrol	0.0005600	<LOQ	Terpinolene	0.0005000	<LOQ
cis-Nerolidol	0.0006800	0.02480	trans-b-Ocimene	0.0004200	0.01300
cis-Ocimene	0.0005200	<LOQ	trans-Caryophyllene	0.0006600	0.6597
Eucalyptol	0.0007200	<LOQ	trans-Nerolidol	0.0007200	0.1204
Farnesene	0.0008400	0.5412	Valencene	0.0005600	<LOQ
Fenchone	0.0005000	<LOQ			

Terpene Totals	%	Pass/Fail
Total Terpenes	3.332	PASS



**Alicia Caruso-Thomas**  
 Laboratory Director

01/22/2025  
*Alicia Caruso-Thomas*

**Phyto-Farma Labs**  
 49 John Hicks Drive  
 Warwick, NY 10990  
 (845) 202-9737



This is a Phyto-Farma certification that relates only to the material tested and shall not be reproduced, unless in its entirety, without written approval from Phyto-Farma. Test results are confidential, unless explicitly waived. All Pass/Fail results please reference state regulations released on 01FEB2024. Pass/Fail results do not use uncertainty, but is available upon request. The product represented has been tested by Phyto-Farma Labs using validated scientific methodologies. Note action levels are state determined thresholds for human safety and consumption. Acronym Definitions: ND - Not Detected, LOQ - Limit of Quantification, ULOQ - Upper Limit of Quantification; are terms used to describe the reliably measured smallest and largest concentrations. <LOQ\* denotes the result is above detection limit, but below quantifiable limit. CFU - Colony Forming Units. Cannabis Product Sampling SOP# SOP.T.20.010.



Twin Arch Farm LLC  
 Address: 200 Twin Arch Road, Rock Tavern, NY 12575  
 Contact Name:  
 Contact Phone:  
 License #: MICR-24-000116  
 Sample ID: 2501SMNY0035.0143

**CERTIFICATE OF ANALYSIS**

Permit #: OCM-CPL-00004

Certificate: 8049.1

**Trace Metals**

**Pass**

**Sample Analysis**

Date: 01/21/2025 04:46 PM

SOP: NY.SOPT.40.050

Analyzed By: ICP-MS

Sample Weight: 0.1282 g

Analyst: Moni Kaneti

Analyte	LOQ (µg/g)	Action Limit (µg/g)	Results (µg/g)	Pass/Fail
Antimony (Sb)*	0.315	2.00	<LOQ	PASS
Arsenic (As)*	0.180	0.200	<LOQ	PASS
Cadmium (Cd)*	0.159	0.200	<LOQ	PASS
Chromium (Cr)*	0.891	110	<LOQ	PASS
Copper (Cu)*	0.984	30.0	10.9	PASS
Lead (Pb)*	0.195	0.500	<LOQ	PASS
Mercury (Hg)*	0.0330	0.100	<LOQ	PASS
Nickel (Ni)*	0.273	5.00	<LOQ	PASS

\* Analyte is not included in ISO 17025 scope of accreditation

**Mycotoxin Analysis**

**Pass**

**Sample Analysis**

Date: 01/22/2025 11:13 AM

SOP: NY.SOPT.40.180

Analyzed By: LC-MS/MS

Sample Weight: 0.1 g

Analyst: Destiny Ribadeneyra

Analyte	LOQ (µg/g)	Action Limit (µg/g)	Results (µg/g)	Pass/Fail
Sum of Aflatoxins	-	0.020	0	PASS
Aflatoxin B1	0.0010	0.020	<LOQ	PASS
Aflatoxin B2	0.0020	0.020	<LOQ	PASS
Aflatoxin G1	0.0010	0.020	<LOQ	PASS
Aflatoxin G2	0.0020	0.020	<LOQ	PASS
Ochratoxin A	0.0020	0.020	<LOQ	PASS

Alicia Caruso-Thomas

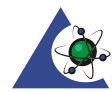
01/22/2025

*Alicia Caruso-Thomas*

Laboratory Director

Phyto-Farma Labs

49 John Hicks Drive  
 Warwick, NY 10990  
 (845) 202-9737



Accreditation #: 121747

This is a Phyto-Farma certification that relates only to the material tested and shall not be reproduced, unless in its entirety, without written approval from Phyto-Farma. Test results are confidential, unless explicitly waived. All Pass/Fail results please reference state regulations released on 01FEB2024. Pass/Fail results do not use uncertainty, but is available upon request. The product represented has been tested by Phyto-Farma Labs using validated scientific methodologies. Note action levels are state determined thresholds for human safety and consumption. Acronym Definitions: ND - Not Detected, LOQ - Limit of Quantification, ULOQ - Upper Limit of Quantification; are terms used to describe the reliably measured smallest and largest concentrations. <LOQ\* denotes the result is above detection limit, but below quantifiable limit. CFU - Colony Forming Units. Cannabis Product Sampling SOP# SOP.T.20.010.



**Twin Arch Farm LLC**  
 Address: 200 Twin Arch Road, Rock Tavern, NY 12575  
 Contact Name:  
 Contact Phone:  
 License #: MICR-24-000116  
 Sample ID: 2501SMNY0035.0143

**CERTIFICATE OF ANALYSIS**  
 Permit #: OCM-CPL-00004

Certificate: 8049.1

**Pesticides LC**

**Pass**

**Sample Analysis**

**Date:** 01/22/2025 11:15 AM

**SOP:** NY.SOPT.040.270

**Analyzed By:** LC-MS/MS

**Sample Weight:** 1 g

**Analyst:** Destiny Ribadeneyra

Analyte	LOQ (ppm)	Action Limit (ppm)	Results (ppm)	Pass/Fail	Analyte	LOQ (ppm)	Action Limit (ppm)	Results (ppm)	Pass/Fail
Abamectin*	0.0180	0.500	<LOQ	PASS	Imidacloprid*	0.00800	0.400	<LOQ	PASS
Acephate*	0.00700	0.400	<LOQ	PASS	Indole-3-butyric acid*	0.00700	1.00	<LOQ	PASS
Acequinocyl*	0.0160	2.00	<LOQ	PASS	Kresoxim methyl*	0.0120	0.400	<LOQ	PASS
Acetamiprid*	0.00500	0.200	<LOQ	PASS	Malathion*	0.0110	0.200	<LOQ	PASS
Aldicarb*	0.00500	0.400	<LOQ	PASS	Metalaxyl*	0.0120	0.200	<LOQ	PASS
Azadirachtin*	0.0220	1.00	<LOQ	PASS	Methiocarb*	0.00400	0.200	<LOQ	PASS
Azoxystrobin*	0.00600	0.200	<LOQ	PASS	Methomyl*	0.0120	0.400	<LOQ	PASS
Bifenazate*	0.00600	0.200	<LOQ	PASS	Mevinphos*	0.0190	1.00	<LOQ	PASS
Bifenthrin*	0.00300	0.200	<LOQ	PASS	MGK-264*	0.0110	0.200	<LOQ	PASS
Boscalid*	0.0110	0.400	<LOQ	PASS	Myclobutanil*	0.0130	0.200	<LOQ	PASS
Carbaryl*	0.00600	0.200	<LOQ	PASS	Naled*	0.00500	0.500	<LOQ	PASS
Carbofuran*	0.00500	0.200	<LOQ	PASS	Oxamyl*	0.00800	1.00	<LOQ	PASS
Chlorantraniliprole*	0.00600	0.200	<LOQ	PASS	Paclobutrazol*	0.0150	0.400	<LOQ	PASS
Chloromequat chloride*	0.0190	1.00	<LOQ	PASS	Permethrins, Total*	0.00900	0.200	<LOQ	PASS
Chlorpyrifos*	0.00900	0.200	<LOQ	PASS	Phosmet*	0.00700	0.200	<LOQ	PASS
Clofentezine*	0.0100	0.200	<LOQ	PASS	Piperonyl Butoxide*	0.00600	2.00	<LOQ	PASS
Daminozide*	0.00400	1.00	<LOQ	PASS	Prallethrin*	0.00800	0.200	<LOQ	PASS
Diazinon*	0.00700	0.200	<LOQ	PASS	Propiconazole*	0.00600	0.400	<LOQ	PASS
Dichlorvos*	0.0120	1.00	<LOQ	PASS	Propoxur*	0.00800	0.200	<LOQ	PASS
Dimethoate*	0.00600	0.200	<LOQ	PASS	Pyrethrins*	0.0140	1.00	<LOQ	PASS
Dimethomorph*	0.00500	1.00	<LOQ	PASS	Pyridaben*	0.00600	0.200	<LOQ	PASS
Ethoprophos*	0.0130	0.200	<LOQ	PASS	Spinetoram, Total*	0.00500	1.00	<LOQ	PASS
Etofenprox*	0.00300	0.400	<LOQ	PASS	Spinosad, Total*	0.00600	0.200	<LOQ	PASS
Etoxazole*	0.00500	0.200	<LOQ	PASS	Spiromesifen*	0.0130	0.200	<LOQ	PASS
Fenhexamid*	0.0150	1.00	<LOQ	PASS	Spirotetramat*	0.00600	0.200	<LOQ	PASS
Fenoxycarb*	0.0110	0.200	<LOQ	PASS	Spiroxamine*	0.00400	0.200	<LOQ	PASS
Fenpyroximate*	0.00200	0.400	<LOQ	PASS	Tebuconazole*	0.0120	0.400	<LOQ	PASS
Flonicamid*	0.00700	1.00	<LOQ	PASS	Thiacloprid*	0.00800	0.200	<LOQ	PASS
Fludioxonil*	0.0170	0.400	<LOQ	PASS	Thiamethoxam*	0.00800	0.200	<LOQ	PASS
Hexythiazox*	0.00500	1.00	<LOQ	PASS					

\* Analyte is not included in ISO 17025 scope of accreditation

**Alicia Caruso-Thomas**  
 Laboratory Director

01/22/2025  
*Alicia Caruso-Thomas*

**Phyto-Farma Labs**  
 49 John Hicks Drive  
 Warwick, NY 10990  
 (845) 202-9737



This is a Phyto-Farma certification that relates only to the material tested and shall not be reproduced, unless in its entirety, without written approval from Phyto-Farma. Test results are confidential, unless explicitly waived. All Pass/Fail results please reference state regulations released on 01FEB2024. Pass/Fail results do not use uncertainty, but is available upon request. The product represented has been tested by Phyto-Farma Labs using validated scientific methodologies. Note action levels are state determined thresholds for human safety and consumption. Acronym Definitions: ND - Not Detected, LOQ - Limit of Quantification, ULOQ - Upper Limit of Quantification, are terms used to describe the reliably measured smallest and largest concentrations. <LOQ\* denotes the result is above detection limit, but below quantifiable limit. CFU - Colony Forming Units. Cannabis Product Sampling SOP# SOP.T.20.010.



**Twin Arch Farm LLC**  
 Address: 200 Twin Arch Road, Rock Tavern, NY 12575  
 Contact Name:  
 Contact Phone:  
 License #: MICR-24-000116  
 Sample ID: 2501SMNY0035.0143



**Phyto-Farma Labs**  
 a Smithers company

**CERTIFICATE OF ANALYSIS**

Permit #: OCM-CPL-00004

Certificate: 8049.1

**Pesticides GC**

**Pass**

**Sample Analysis**

**Date:** 01/22/2025 03:26 PM

**SOP:** NYS.SOPT.040.271

**Analyzed By:** GC-MS/MS

**Sample Weight:** N/A

**Analyst:** Destiny Ribadeneyra

Analyte	LOQ (ppm)	Action Limit (ppm)	Results (ppm)	Pass/Fail
Captan*	0.300	1.00	<LOQ	PASS
Chlordane*	0.0700	1.00	<LOQ	PASS
Chlorfenapyr*	0.100	1.00	<LOQ	PASS
Coumaphos*	0.190	1.00	<LOQ	PASS
Cyfluthrin*	0.110	1.00	<LOQ	PASS
Cypermethrin*	0.240	1.00	<LOQ	PASS
Fipronil*	0.170	0.400	<LOQ	PASS
Imazalil*	0.170	0.200	<LOQ	PASS
Methyl parathion*	0.0900	0.200	<LOQ	PASS
Pentachloronitrobenzene*	0.170	1.00	<LOQ	PASS
Trifloxystrobin*	0.110	0.200	<LOQ	PASS

\* Analyte is not included in ISO 17025 scope of accreditation

**Alicia Caruso-Thomas**

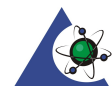
01/22/2025

*Alicia Caruso-Thomas*

Laboratory Director

**Phyto-Farma Labs**

49 John Hicks Drive  
 Warwick, NY 10990  
 (845) 202-9737



Accreditation #: 121747

This is a Phyto-Farma certification that relates only to the material tested and shall not be reproduced, unless in its entirety, without written approval from Phyto-Farma. Test results are confidential, unless explicitly waived. All Pass/Fail results please reference state regulations released on 01FEB2024. Pass/Fail results do not use uncertainty, but is available upon request. The product represented has been tested by Phyto-Farma Labs using validated scientific methodologies. Note action levels are state determined thresholds for human safety and consumption. Acronym Definitions: ND - Not Detected, LOQ - Limit of Quantification, ULOQ - Upper Limit of Quantification; are terms used to describe the reliably measured smallest and largest concentrations. <LOQ\* denotes the result is above detection limit, but below quantifiable limit. CFU - Colony Forming Units. Cannabis Product Sampling SOP# SOP.T.20.010.



Twin Arch Farm LLC  
 Address: 200 Twin Arch Road, Rock Tavern, NY 12575  
 Contact Name:  
 Contact Phone:  
 License #: MICR-24-000116  
 Sample ID: 2501SMNY0035.0143

Certificate: 8049.1

**Microbial Impurities - MDG**

**Pass**

**Sample Analysis**

**Date:** 01/20/2025 08:56 PM      **SOP:** NYS.SOPT.40.273  
**Analyzed By:** PCR  
**Analyst:** Kristy Lee

Analyte	Microbial Type	LOQ (CFU/g)	Allowable Limit	Results	Pass/Fail
Shiga toxin-producing Escherichia coli	Bacterial	1	Not Detected	Not Detected	PASS
Salmonella species	Bacterial	1	Not Detected	Not Detected	PASS
Aspergillus flavus	Fungal	1	Not Detected	Not Detected	PASS
Aspergillus niger	Fungal	1	Not Detected	Not Detected	PASS
Aspergillus terreus	Fungal	1	Not Detected	Not Detected	PASS
Aspergillus fumigatus	Fungal	1	Not Detected	Not Detected	PASS

**Alicia Caruso-Thomas**  
 Laboratory Director

01/22/2025  
*Alicia Caruso-Thomas*

**Phyto-Farma Labs**  
 49 John Hicks Drive  
 Warwick, NY 10990  
 (845) 202-9737



This is a Phyto-Farma certification that relates only to the material tested and shall not be reproduced, unless in its entirety, without written approval from Phyto-Farma. Test results are confidential, unless explicitly waived. All Pass/Fail results please reference state regulations released on 01FEB2024. Pass/Fail results do not use uncertainty, but is available upon request. The product represented has been tested by Phyto-Farma Labs using validated scientific methodologies. Note action levels are state determined thresholds for human safety and consumption. Acronym Definitions: ND - Not Detected, LOQ - Limit of Quantification, ULOQ - Upper Limit of Quantification; are terms used to describe the reliably measured smallest and largest concentrations. <LOQ> denotes the result is above detection limit, but below quantifiable limit. CFU - Colony Forming Units. Cannabis Product Sampling SOP# SOP.T.20.010.



Twin Arch Farm LLC  
 Address: 200 Twin Arch Road, Rock Tavern, NY 12575  
 Contact Name:  
 Contact Phone:  
 License #: MICR-24-000116  
 Sample ID: 2501SMNY0035.0143



**Phyto-Farma Labs**  
 a Smithers company

**CERTIFICATE OF ANALYSIS**

Permit #: OCM-CPL-00004

Certificate: 8049.1

**Microbial Impurities - TAPC**

**Pass**

**Sample Analysis**

**Date:** 01/20/2025 10:16 AM      **SOP:** NYS.SOPT.040.200  
**Analyzed By:** Plating  
**Analyst:** Kristy Lee

Analyte	LOQ (CFU/g)	Action Limit (CFU/g)	Results (CFU/g)	Pass/Fail
Total Aerobic Bacteria/CDP-TC	5	N/A	<LOQ	PASS

**Microbial Impurities - TYMC**

**Pass**

**Sample Analysis**

**Date:** 01/20/2025 05:33 PM      **SOP:** NYS.SOPT.040.200  
**Analyzed By:** Plating  
**Analyst:** Kristy Lee

Analyte	LOQ (CFU/g)	Action Limit (CFU/g)	Results (CFU/g)	Pass/Fail
Total Yeast and Mold	5	N/A	<LOQ	PASS
Mold Count	5	N/A	<LOQ	PASS
Yeast Count	5	N/A	<LOQ	PASS

**Alicia Caruso-Thomas**  
 Laboratory Director

01/22/2025  
*Alicia Caruso-Thomas*

**Phyto-Farma Labs**  
 49 John Hicks Drive  
 Warwick, NY 10990  
 (845) 202-9737



This is a Phyto-Farma certification that relates only to the material tested and shall not be reproduced, unless in its entirety, without written approval from Phyto-Farma. Test results are confidential, unless explicitly waived. All Pass/Fail results please reference state regulations released on 01FEB2024. Pass/Fail results do not use uncertainty, but is available upon request. The product represented has been tested by Phyto-Farma Labs using validated scientific methodologies. Note action levels are state determined thresholds for human safety and consumption. Acronym Definitions: ND - Not Detected, LOQ - Limit of Quantification, ULOQ - Upper Limit of Quantification; are terms used to describe the reliably measured smallest and largest concentrations. <LOQ\* denotes the result is above detection limit, but below quantifiable limit. CFU - Colony Forming Units. Cannabis Product Sampling SOP# SOP.T.20.010.





Twin Arch Farm LLC  
 Address: 200 Twin Arch Road, Rock Tavern, NY 12575  
 Contact Name:  
 Contact Phone:  
 License #: MICR-24-000116  
 Sample ID: 2501SMNY0035.0143



**Phyto-Farma Labs**  
 a Smithers company

**CERTIFICATE OF ANALYSIS**

Permit #: OCM-CPL-00004

Certificate: 8049.1

**Foreign Matter**

**Pass**

**Sample Analysis**

Date: 01/17/2025 12:55 PM      SOP: NYS.SOPT.040.250

Analyzed By: Microscopy

Analyst: Destiny Ribadeneyra

Analyte	LOQ	Action Limit	Results	Pass/Fail
Mammalian excreta (mg/lb)	0	1.0	0	PASS
Stems >3mm in diameter (%)	0	5.0	0	PASS
Other Foreign Material (%)	0	2.0	0	PASS

**Moisture Content**

**Pass**

**Sample Analysis**

Date: 01/22/2025 03:31 PM      SOP: NY.SOPT.040.220

Analyzed By: Moisture Balance

Analyst: Moni Kaneti

Analyte	LOQ (%)	Action Limit (%)	Results (%)	Pass/Fail
Moisture Content	0.0	5.0 - 15.0	11.0	PASS

**Water Activity**

**Pass**

**Sample Analysis**

Date: 01/22/2025 10:15 AM      SOP: NY.SOPT.040.210

Analyzed By: Water Activity Meter

Analyst: Moni Kaneti

Analyte	LOQ (Aw)	Action Limit (Aw)	Results (Aw)	Pass/Fail
Water Activity	0.25	0.65	0.29	PASS

Alicia Caruso-Thomas

01/22/2025

*Alicia Caruso-Thomas*

Laboratory Director

Phyto-Farma Labs

49 John Hicks Drive  
 Warwick, NY 10990  
 (845) 202-9737



This is a Phyto-Farma certification that relates only to the material tested and shall not be reproduced, unless in its entirety, without written approval from Phyto-Farma. Test results are confidential, unless explicitly waived. All Pass/Fail results please reference state regulations released on 01FEB2024. Pass/Fail results do not use uncertainty, but is available upon request. The product represented has been tested by Phyto-Farma Labs using validated scientific methodologies. Note action levels are state determined thresholds for human safety and consumption. Acronym Definitions: ND - Not Detected, LOQ - Limit of Quantification, ULOQ - Upper Limit of Quantification; are terms used to describe the reliably measured smallest and largest concentrations. <LOQ\* denotes the result is above detection limit, but below quantifiable limit. CFU - Colony Forming Units. Cannabis Product Sampling SOP# SOP.T.20.010.